

CENTENNIAL PARK ENHANCEMENT PROJECT

Community Open House

February 19, 2019

AGENDA

- | | |
|----------------------------------|------------|
| ▶ Introduction | 5 minutes |
| ▶ Park Overview Presentation | 5 minutes |
| ▶ Community Consultation Results | 5 minutes |
| ▶ Concept Plan Presentation | 15 minutes |
| ▶ Q&A | 10 minutes |
| ▶ Next Steps | 5 minutes |

EXISTING CONDITIONS

































COMMUNITY CONSULTATION PROCESS

- ▶ 2 open sessions hosted January 10th and 12th
- ▶ Included interactive cardstorming activities & written survey
- ▶ Results compiled by MCPRA working group & provided to Fotenn
- ▶ Concept Options prepared by Fotenn & reviewed with MCPRA working group
- ▶ “Order of Magnitude” Costing prepared by Fotenn
- ▶ Concept Plan finalized and presented tonight!

COMMUNITY CONSULTATION RESULTS

DEMOGRAPHIC PROFILE

Variable	Manotick	Ottawa Average
% aged 0-9 years	9.9	11.1
% aged 10-19 years	14.9	12.3
% aged 20-29 years	9	14.4
% aged 30-39 years	8	13.4
% aged 40-49 years	16.1	15.6
% aged 50-59 years	18.3	14.3
% aged 60-69 years	14.4	9.8
% aged 70-79 years	6.1	5.4
% aged 80 years and over	3.3	3.7

- ▶ 2011 Census, Ottawa Neighbourhood Study
- ▶ Greater Manotick Area - including Rideau Forest, to Carleton Golf and Carsonby - ~10,000
- ▶ 42% aged 50 years+; City at 33%
- ▶ Highly educated - 78% with some post-secondary
- ▶ Above average household income

RECREATION TRENDS

Activity	Percent
Walking for exercise	84%
Gardening or yard work	74%
Exercise at home	65%
Swimming	58%
Jogging or running	49%
Bicycling	49%
Weight training	41%
Social dancing	39%
Ice skating	29%
Exercise classes or aerobics	28%
Yoga or Tai Chi	27%
Golfing	23%
Bowling	22%
Soccer	22%

- ▶ The 'quality' of the experience is valued
- ▶ People want variety - looking for *local* festivals/ special events
- ▶ More demand for drop-in, self-schedule, short workshops given busy lifestyle
- ▶ Multi-use spaces and facilities desirable
- ▶ Walking popular across all ages; gardening popular with older adults, not youth

WHAT DO YOU VALUE ABOUT CENTENNIAL PARK?

Theme	Total
<i>NATURAL FEATURES:</i> Trees, Green Space, Open Space, Open Site Lines, visibility of entire park, mix of trees & open space	33
<i>CENTRAL VILLAGE LOCATION:</i> In Town, Good Access, Central Location, Local, Proximity to Indoor Recreation Space/ Access via multiple paths	26
<i>MULTI-PURPOSE:</i> Variety of Organized Recreation Activities/ Diversity/ Multi-Use/ Multi-Function/Flexibility of Use/ Broad Appeal/ All age groups	23
<i>CONNECTIVITY:</i> Walking Paths Connecting neighbourhoods to park	18
<i>COMMUNITY GATHERING PLACE:</i> Community Hub/Haven e.g. picnics, fireworks, Soapbox Derby, social hub, ability to host Festivals, community use and involvement, history of community involvement	18
<i>MANY AMENITIES SERVING ALL AGES:</i> Ball Facilities, Outdoor Rink, Manotick Mountain, Playstructure, Tennis Courts, Soccer Fields, Skate Park	

HOW COULD WE ENHANCE/ IMPROVE CENTENNIAL PARK

Upgrade/ New Outdoor Rink - make more attractive, better lighting, replace boards	22
Skate Park improvements - 'plaza' skate park, re-vision the skate board park	20
Improve / Expand/Sufficient Parking/ pave or improve overflow parking, pedestrian safety in the parking lot	20
Ball Upgrades - screen, re-crown ball infields, improve drainage & lighting	19
Improved Landscaping - beautification at entrance, more trees everywhere, shaded area around playground	19
Gathering/ Sitting Areas - public BBQ, patio, picnic area, social space, picnic tables	16
Basketball Court - use outdoor rink for basketball in the summer	15
Improve Park Drainage - paths, ball diamonds, top up pathways	13
More benches on pathways throughout the park	13
More Park Lighting - in skate park/ outdoor rink area, parking area, entrances & exits	11

WHAT ARE THE TOP 3 PRIORITY PROJECTS FOR CENTENNIAL PARK?

Outdoor Rink/ Basketball Multi-use space, paved	29
Skate park/ plaza	28
Splash pad	15
Park Landscaping / Beautification - trees/ gardens/benches/picnic area	14
Drainage - in open space, pathways, playing fields, entire park	14
Additional and Improved Parking	8
Ball Field Upgrades - netting; diamond #1 improvements, lifecycle	7
Walking Paths - paved, lit, wider, winter use, safe, signed (marked trails)	7
Improved Lighting - throughout the park	6

PRELIMINARY CONCEPT PLAN

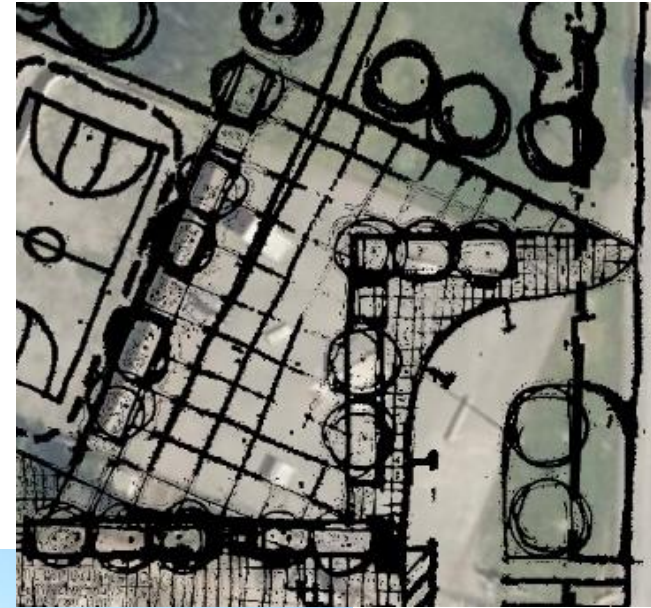
MULTI-USE COURT / TEMPORARY BOARDED RINK

- ▶ Removable rink boards
- ▶ Paved surface
- ▶ Line painting
- ▶ Basketball hoops
- ▶ Players benches
- ▶ Perimeter drainage



SKATE PLAZA

- ▶ Multi-use
- ▶ Large level central area
- ▶ Plaza style skate events
 - ▶ Steps
 - ▶ Seat walls
 - ▶ Ramps
- ▶ Benches
- ▶ Lighting
- ▶ Tree Planting
- ▶ Drainage



ENTRY PLAZA

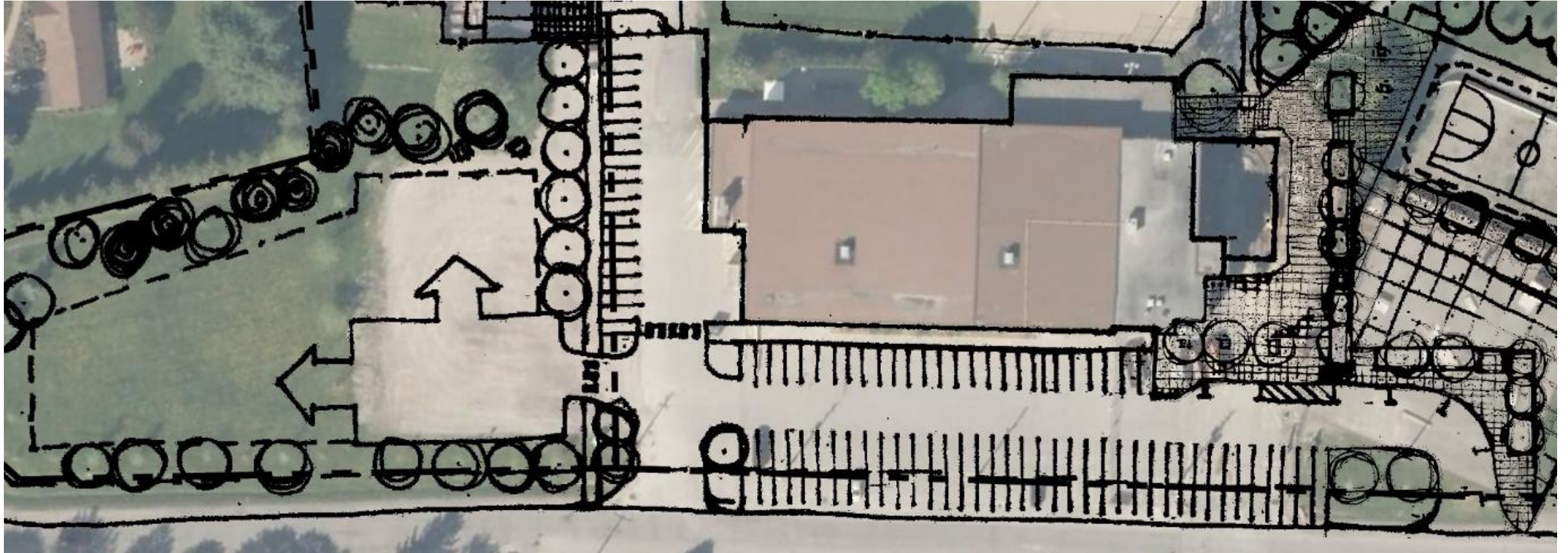
- ▶ Maintain fire route
- ▶ Accessible
- ▶ Build on existing entrance enhancements (planting, concrete unit pavers)
- ▶ Benches
- ▶ Games tables
- ▶ Tree Planting



IMPROVED / EXPANDED PARKING AREA

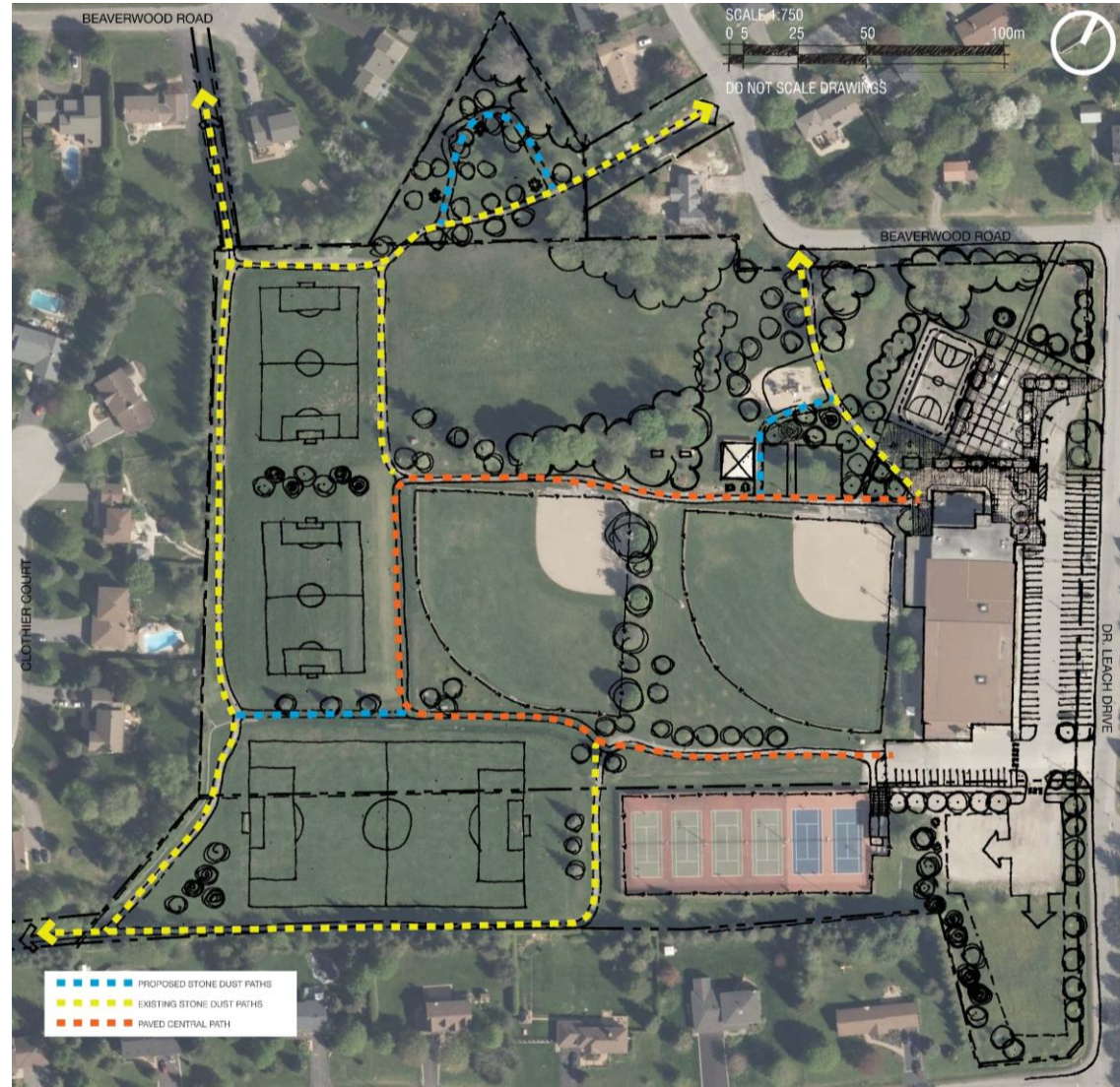
- ▶ Defined entrances and exits
- ▶ Drop-off zone
- ▶ Defined pedestrian routes and cross walks
- ▶ Paved primary parking areas with gravel / lawn overflow parking areas
- ▶ Lighting

IMPROVED / EXPANDED PARKING AREA



IMPROVED PATHWAY NETWORK

- ▶ Additional paths to improve connectivity
- ▶ Paved central pathway loop
- ▶ Benches

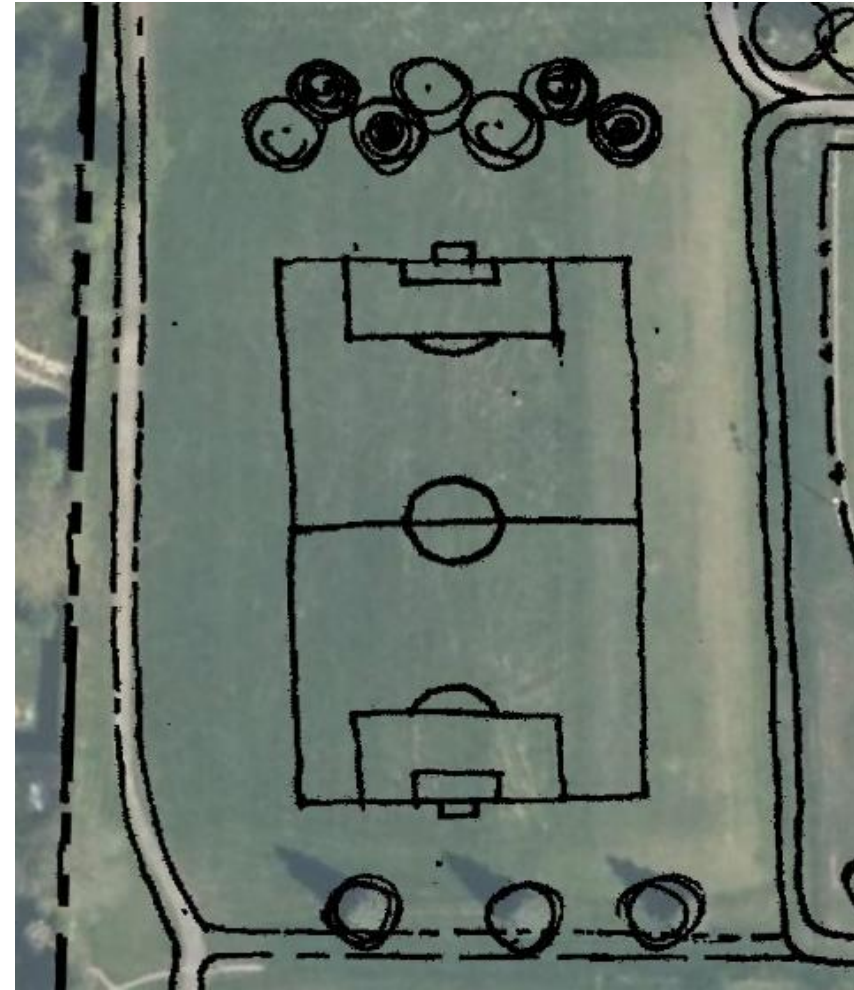


FACILITY UPGRADES

- ▶ Improved drainage
- ▶ Ball diamonds
 - ▶ Increase fence height / add screen on east side of Ball Diamond #1
 - ▶ Groom infields
 - ▶ Improve lighting
 - ▶ Future covered dugouts
- ▶ Tennis courts
 - ▶ Re-surface existing courts
- ▶ Playground
 - ▶ Future lifecycle replacement of existing play equipment
 - ▶ Provide accessible re-configured play areas
 - ▶ Future splashpad

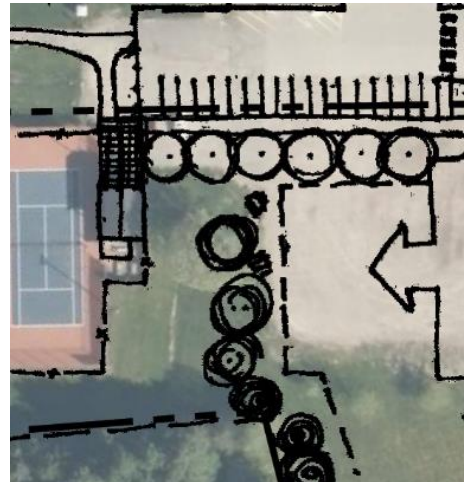
FACILITY UPGRADES

- ▶ Mini Soccer Field
 - ▶ Remove decommissioned tile bed
 - ▶ Re-grade, topsoil, and seed field
 - ▶ Install goal posts
 - ▶ Tree planting



OTHER POTENTIAL IMPROVEMENTS

- ▶ Naturalized area / sculpture park
- ▶ Potential temporary seasonal washroom / future permanent field house with washroom
- ▶ Potential future recreational development area near tennis courts



PARK FURNISHINGS

- ▶ Benches
- ▶ Picnic tables
- ▶ BBQs
- ▶ Waste receptacles
- ▶ Bike racks



AESTHETIC ENHANCEMENTS

- ▶ Protect existing trees
- ▶ New tree planting
- ▶ Enhance park entrances
- ▶ Planting in parking lot islands
- ▶ Naturalized areas
- ▶ Consistent signage

ADDITIONAL PROGRAMMING / IMPROVED MAINTENANCE

- ▶ Extended washroom hours
- ▶ Winter maintenance of central path loop
- ▶ Cross country ski tracks set
- ▶ Regular garbage pick up
- ▶ Community events

QUESTIONS?

NEXT STEPS

