

Copyright Reserved
The Copyrights to all designs and drawings are the property of Fotenn Consultants Inc. Unauthorized reproduction or use is forbidden. DO NOT SCALE DRAWING

Copyright réservés
Les droits d'auteur à tous les modèles et dessins sont la propriété de Fotenn Consultants Inc. Reproduction ou utilisation non autorisée est interdite. NE PAS L'ÉCHELLE DE DESSIN

Client / Client



Legend / légende

- LIMIT OF WORK
- PROPERTY LINE
- TREE PROTECTION FENCE - 1/1.5
- GRASS SEEDING
- ASPHALT PAVING - PUMPTRACK
- ASPHALT PAVING - HEAVY DUTY
- EXISTING TREE TO REMAIN
- ⊕ PROPOSED AREA DRAIN
- - - EXISTING CONTOUR*
- - - PROPOSED CONTOUR*

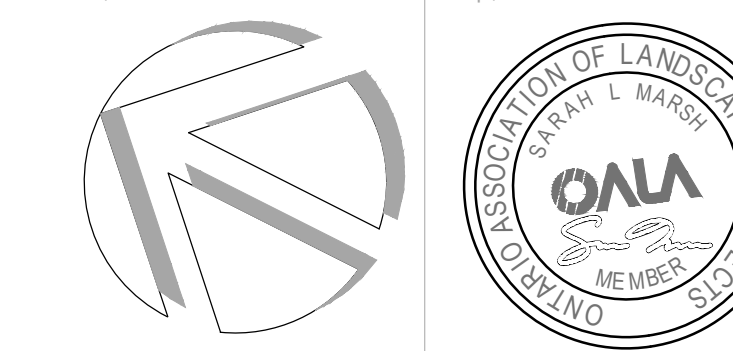
*REFER TO DRAWING SK-006 FOR GRADING

07	Issued for Tender	2022/11/08
06	Issued for 90% submission	2022/09/22
05	Issued for coordination	2022/09/09
04	Reissued for 60% submission	2022/06/21
03	Issued for coordination	2022/06/15
02	Issued for 60% submission	2022/05/31
01	Issued for discussion	2022/05/05

rev'n description / la description yyyy/mm/dd

FOTENN Planning + Design
396 Cooper Street, Suite 300
Ottawa, ON, CANADA K2P 2H7
613.730.5709
fotenn.com

north / le nord stamp / le cachet



project / projet

CENTENNIAL PARK PHASE 2

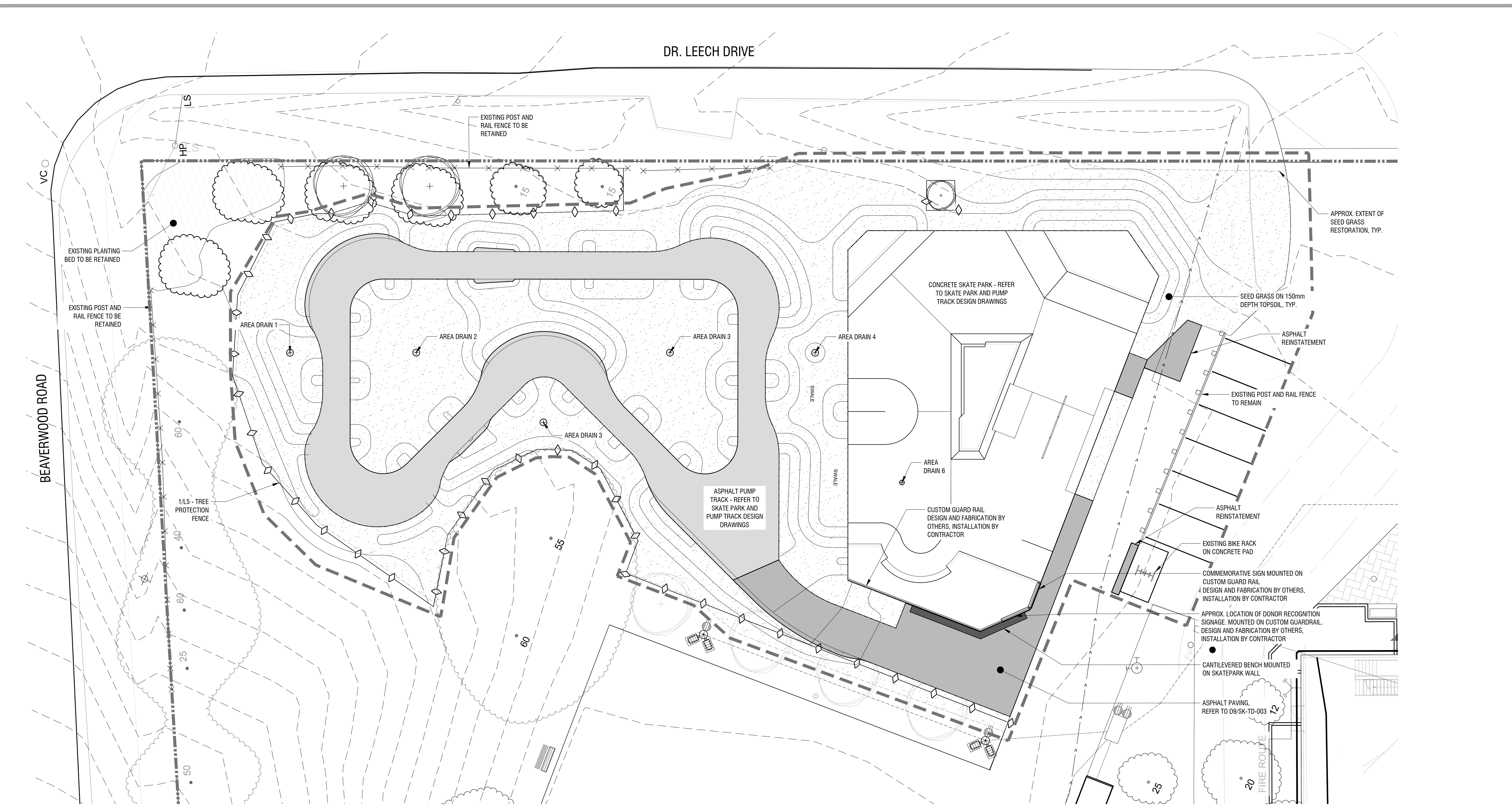
drawing / dessin

LANDSCAPE PLAN

designed / conçu	drawn / dessiné	reviewed / examiné
SM	SM / SG / BM	SM
date	project number / No. du projet	
2022	X ##-##	

drawing number / No. du dessin

L3 of 6



1 LANDSCAPE PLAN
L3 1:150

PRELIMINARY
NOT FOR CONSTRUCTION

PLOT INFORMATION: DWG NAME: P:\PROJECTS\Ottawa, City of\Centennial Park - Stage 2\10 DESIGN DEVELOPMENT\PLANS\Rev1\Centennial Park Phase 2.dwg, PLOT DATE: 2022-11-08 11:01:16 AM, SHEET SIZE: ARCH A (36.00 x 48.00 inches), PLOTTED BY: Beama Mubarek, LAST SAVED BY: mubarek